



PRODUCT CATALOGUE

产品目录

## MEDICAL GRADE CAPACITOR CHARGER – PCA-40

- output power 4kW
- output voltage up to 2kV (4kV on request)
- input 230VAC, 1ph
- IEC 60601-1 and EN 55011/CISPR11 compliance (safety, PFC >98%, low EMI and low leakage current)



## 医疗级充电电源-PCA-40

- 输出功率4kW
- 输出电压可达2kV (如需可达4kV)
- 输入230VAC, 1ph
- 医疗标准承诺 (IEC60601-1和 EN 55011/CISPR11): 安全, 功率因数: 0.98, 低电磁干扰, 低泄漏电流

## MEDICAL GRADE CAPACITOR CHARGER – PCA-20

- output power 2kW
- output voltage up to 2kV (4kV on request)
- dual input 110/230VAC
- IEC 60601-1 and EN 55011/CISPR11 compliance (safety, PFC >98%, low EMI and low leakage current)



## 医疗级充电电源-PCA-20

- 输出功率2kW
- 输出电压可达2kV (如需可达4kV)
- 输入110/230VAC, 1ph
- 医疗标准承诺 (IEC60601-1和 EN 55011/CISPR11): 安全, 功率因数: 0.98, 低电磁干扰, 低泄漏电流

## MEDICAL GRADE CAPACITOR CHARGER – PCA-10

- output power 1kW
- output voltage up to 2kV
- dual input 110/230VAC
- IEC 60601-1 and EN 55011/CISPR11 compliance (safety, PFC >98%, low EMI and low leakage current)



## 医疗级充电电源-PCA-10

- 输出功率1kW
- 输出电压可达2kV
- 输入110/230VAC, 1ph
- 通过IEC60601-1和 EN55011/CISPR11医疗认证 (安全性好, PFC功率因数校正 >98%, 低电磁干扰和低泄露电流)

## GENERAL PURPOSE CAPACITOR CHARGERS – PCP-series

- output power from 700W to 3500W
- output voltage up to 2kV (4kV on request)
- input 230VAC, 1ph
- compact design
- very attractive pricing



## 通用充电电源-PCP系列

- 输出功率 700W 到 3500W
- 输出电压可达 2kV (如需可达4kV)
- 输入230VAC, 1ph
- 紧凑型设计
- 价格很有吸引力, 性价比高

# MODULES FOR FLASHLAMP PUMPING

# 脉冲灯泵模组

## DISCHARGE CIRCUIT – NBU-1012

- IGBT-based discharge circuit
- free discharge, quazi-rectangular pulse shape
- variable pulse width (50us-100ms)
- output power up to 2kW
- output voltage up to 1000V
- output current up to 1000A



## 放电电路 – NBU-1012

- 基于IGBT的放电回路
- 自主放电, 准矩形脉冲方波
- 可调脉冲宽度 (50us-100ms)
- 输出功率可达2kW
- 输出电压可达1000V
- 输出电流可达1000A

## DISCHARGE CIRCUIT – NBD-0505-PWM

- IGBT-based discharge circuit
- PWM discharge, true-rectangular pulse shape
- variable pulse width (50us-100ms)
- output power up to 2kW
- output voltage up to 500V
- output current up to 500A



## 放电回路 – NBD-0505-PWM

- 基于IGBT的放电回路
- 脉宽调制 (PWM) 放电, 标准方波脉冲
- 可调脉冲宽度 (50us-100ms)
- 输出功率可达2kW
- 输出电压可达500V
- 输出电流可达500A

## SIMMER SUPPLY MODULES – SBZ-2008/3008

- +24V DC input
- one and two flashlamp modifications
- output current up to 800mA



## 预燃电源模块-SBZ-2008/3008

- +24V 直流输入
- 可供单路和双路氙灯输出
- 输出电流可达800mA

## SIMMER SUPPLY MODULES – SCA-2008/3008

- 230V AC input
- one and two flashlamp modifications
- output current up to 800mA

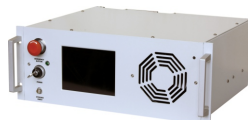


## 预燃电源模块-SCA-2008/3008

- 230V 交流输入
- 可供单路和双路氙灯输出
- 输出电流可达800mA

## CUSTOM FLASHLAMP DRIVERS

- different applications – from IPL to Nd:YAG, Alexandrite, Er:YAG, CTH:YAG and other lasers
- different power – up to 4k
- different voltage – up to 1000V
- a variety of options



## 可定制闪光灯驱动

- 各种应用- 从 IPL 到 Nd:YAG, Er:YAG, Alexandrite, CTH:YAG 和其他的激光器
- 不同功率 – 可到 4kW
- 不同电压 – 可达 1000V
- 多种选择

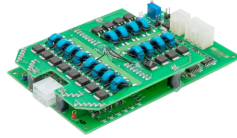
## GENERAL PURPOSE POCKELS CELL DRIVER - QBD

- ideal for q-switching
- pulses up or pulses down modifications
- up to 6kV output voltage
- repetition rate up to 200kHz (at 1kV)
- risetime <20ns
- 24VDC input (embedded HV power supply)



## GENERAL PURPOSE POCKELS CELL DRIVER - QBU

- pulses up and pulses down in one driver
- up to 6kV output voltage
- repetition rate up to 200kHz (at 1kV)
- risetime and falltime <20ns
- suitable for pulse slicing, pulse picking and other advanced applications
- 24VDC input (embedded HV PS)



## COMPACT POCKELS CELL DRIVER - QBD-mini

- ideal for q-switching
- pulses up and pulses down modifications
- up to 4kV output voltage
- repetition rate up to 50kHz (at 1kV)
- risetime <20ns
- as small as 90\*50\*20mm
- 24VDC input (embedded HV PS)



## COMPACT POCKELS CELL DRIVER - QBU-mini

- pulses up and pulses down in one driver
- up to 4kV output voltage
- repetition rate up to 50kHz (at 1kV)
- risetime and falltime <20ns
- suitable for many applications
- as small as 115\*50\*20mm
- 24VDC input (embedded HV PS)



## BENCH-TOP POCKELS CELL DRIVER - QBD-BT

- laboratory bench-top module
- pulses up (normally off) and pulses down (normally on) modifications
- output voltage up to 6kV
- rep. rate up to 200kHz (at low output voltage)
- leading edge <20ns
- ideal for q-switching



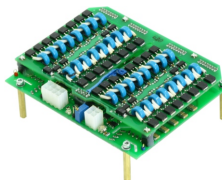
## BENCH-TOP POCKELS CELL DRIVER - QBU-BT

- laboratory bench-top module
- produces HV pulses up and down, repeats incoming TTL signal
- output voltage up to 6kV
- rep. rate up to 10kHz (at 6kV) and up to 200kHz (at 1kV)
- risetime/falltime <20ns
- pulse slicing, pulse picking and other advanced application



## HIGH VOLTAGE POCKELS CELL DRIVER - QBU-10kV

- repeats incoming TTL signal
- output voltage up to 10kV
- 24VDC input (embedded HV PS)
- repetition rate up to 10kHz (at 10kV) and up to 200kHz (at 2kV)
- risetime/falltime <20ns
- pulse slicing, pulse picking and other advanced application



## BENCH-TOP POCKELS CELL DRIVER - QBU-BT-10kV

- bench-top driver for laboratory use
- pulses-up and pulses-down in one driver
- up to 10kV output voltage
- repetition rate up to 10kHz (at 10kV) and up to 200kHz (at 2kV)
- risetime/falltime <20ns
- pulse slicing, pulse picking and other advanced application



## 通用普克尔盒驱动 - QBD

- 调Q的理想选择
- 加压或退压模式
- 输出电压可到 6kV
- 重频可达 200kHz (在1kV时)
- 上升沿 <20ns
- 24VDC输入 (嵌入式高压电源)

## 通用普克尔盒驱动 - QBU

- 加压和退压模式兼具
- 输出电压可到6kV
- 重频可达200kHz (在1kV时)
- 上升沿和下降沿<20ns
- 脉冲选择和其他高级应用
- 24VDC输入 (嵌入式高压电源)

## 电光开关 (普克尔盒) 驱动-QBD-mini

- 调Q的理想选择
- 加压或退压模式
- 输出电压可到4kV
- 重频可达50kHz (在1kV时)
- 上升沿 <20ns
- 尺寸小: 90\*50\*20mm
- 24VDC输入 (嵌入式高压电源)

## 电光开关 (普克尔盒) 驱动-QBU-mini

- 加压和退压模式兼具
- 输出电压可到4kV
- 重频可达50kHz (在1kV时)
- 上升沿和下降沿<20ns
- 适用于很多应用
- 尺寸小: 115\*50\*20mm
- 24VDC输入 (嵌入式高压电源)

## 电光开关 (普克尔盒) 驱动-QBD-BT

- 实验室台式模块
- 升压 (常规时关闭), 降压 (常规时打开) 模式
- 输出电压可达到6kV
- 重复频率可达到200kHz (在低输出电压的情况下)
- 前沿 <20ns
- 调Q驱动的理想搭配

## 电光开关 (普克尔盒) 驱动-QBU-BT

- 实验室台式模块
- 可控的脉冲高压升、降模式
- 连续的TTL信号输入
- 输出电压可达到6kV
- 重复频率可达到200kHz (在低输出电压的情况下)
- 上升沿/下降沿 <20ns
- 可用于脉冲开关, 脉冲选择和其他高级应用

## 高压普克尔盒驱动 - QBU-10kV

- 连续的TTL信号输入
- 输出电压可达到10kV
- 24VDC输入 (嵌入式高压电源)
- 重频可达10kHz (在10kV时), 可达200kHz (低电压下)
- 上升沿/下降沿 <20ns
- 可用于脉冲开关, 脉冲选择和其他高级应用

## 台式普克尔盒驱动 - QBU-BT-10kV

- 实验室用台式驱动
- 加压模式和退压模式兼具
- 输出电压可达10kV
- 重频可达10kHz (在10kV时), 可达200kHz (低电压下)
- 上升沿/下降沿 <20ns
- 适合于多种应用

# POCKELS CELL DRIVERS

# 普克尔盒驱动

## HIGH REPETITION RATE POCKELS CELL DRIVER – HVSW-03

- specialized driver for pico- and femtosecond lasers
- output voltage up to 2kV
- output repetition rate up to 1MHz
- pulse width 14ns (short pulse mode), then 100-2000ns (long pulse mode)
- <7ns rise-time
- 24VDC input (embedded HV power supply)



## 高重频普克尔盒驱动 – HVSW-03

- 皮秒和飞秒激光器的专用驱动
- 输出电压可到 2kV
- 输出重频可达 1MHz
- 脉宽 14ns (短脉冲模式), 100-2000ns (长脉冲模式)
- <7ns上升沿
- 24VDC输入 (嵌入式高压电源)

## HIGH REPETITION RATE POCKELS CELL DRIVER – HVSW-04

- specialized driver for pico- and femtosecond lasers
- output voltage up to 4kV
- output repetition rate up to 4MHz
- pulse width 14ns (short pulse mode), then 50-2000ns (long pulse mode)
- <7ns rise-time
- water cooling



## 高重频普克尔盒驱动 – HVSW-04

- 皮秒和飞秒激光器的专用驱动
- 输出电压可到 4kV
- 输出重频可达 4MHz
- 脉宽 14ns (短脉冲模式), 50-2000ns (长脉冲模式)
- <7ns上升沿
- 水冷

## SYNCHRONIZATION BOARD - PP-CONTROL

- precisely synchronizes up to two Pockels cell drivers to the seed oscillator optical pulse train
- up to 2000ns adjustable delay
- +/-250ps jitter



## 同步控制板 – PP-CONTROL

- 可精确同步控制两个普克尔盒驱动工作在种子光振荡脉冲序列中
- 延迟可调范围：可到2000ns
- +/-250ps 抖动

# DIODE DRIVERS

# 半导体泵浦模块

## PULSED DIODE DRIVER – PDD-300

- a specialized driver for hair removal machines, pulses from 0.5ms to 100ms and longer
- output current up to 150A
- output power up to 300W(rms) and up to 5kW (peak)
- input – 100-240VAC
- IEC 60601-1 and EN 55011/CISPR11 compliance (safety, PFC >98%, low EMI and low leakage current)



## 脉冲LD驱动 – PDD-300

- 脱毛机的专用驱动
- 脉冲输出从 0.5ms 到 100ms 以及更长
- 输出电流可达 150A
- 输出功率可达 300W (rms), 最高达 5kW (峰值)
- 输入 100-240VAC
- 通过 IEC 60601-1 and EN 55011/CISPR11 认证 (安全性好, PFC功率因数校正 >98%, 低电磁干扰和低泄露电流)

## PULSED DIODE DRIVER – PDD-1000

- a specialized driver for hair removal machines, pulses from 0.5ms to 100ms and longer
- output current up to 200A
- very powerful - output power up to 1000W(rms) and up to 10kW (peak)
- good for IPL+diode machines



## 脉冲二极管驱动 – PDD-1000

- 脱毛机的专用驱动
- 脉冲输出从 0.5ms 到 100ms 以及更长
- 输出电流可达 200A
- 高功率 输出功率从 1000W (rms) 到 10kW (峰值)
- 适用于 IPL+LD美容机

## CW DIODE DRIVERS - LDD-150 .. LDD-2000

- CW output
- output current up to 100A
- output power up to 2000W
- dual input 110/230VAC
- medical standards compliance: safety, PFC 0.98, low EMI and leakage current



## 连续LD驱动 – LDD-150 .. LDD-2000

- 连续输出
- 输出电流可达 100A
- 输出功率可达 2000W
- 输入 110/230VAC
- 医疗标准承诺：安全，功率因数：0.98，低电磁干扰，低泄漏电流

## CUSTOM DIODE DRIVERS

- different applications – from Nd:YAG pumping to hair removal
- different outputs – CW, long pulse, short pulse
- different power – up to several kilowatts



## 可定制LD驱动

- 各种应用 – 从 Nd:YAG 激光器到激光脱毛机等
- 各种输出 – 连续, 长脉冲, 短脉冲
- 不同功率 – 可到几kW

## OEM Tech (Manufacturer)

Odoevskogo 129  
220018 Minsk, Belarus  
Phone: +375 17 3224054  
Fax: +375 17 3224064  
[info@oem-tech.by](mailto:info@oem-tech.by)  
[www.oem-tech.by](http://www.oem-tech.by)

## Coupletech (Chinese distributor)

No. 88 West International Exhibition Road,  
High-tech Zone, Jinan, 250101, China  
Phone: +86-531-88153122  
Fax: +86-531-88012121  
[info@coupletech.com](mailto:info@coupletech.com)  
[www.coupletech.com](http://www.coupletech.com)

